



Certified to
NSF/ANSI
Standard 350

FACT SHEET - Residential Water Recycling

With a Hydraloop system, you can recycle up to 95% of shower & bath water and optionally 50% of washing machine water – which enables you to reuse up to 85% of the total in-house domestic water. Due to its innovative and breakthrough technology, Hydraloop water is clean, clear, safe and certified and for toilet flushing, washing machine, garden irrigation and/or to top-up a swimming pool.

Hydraloop H300

H300	Input: Greywater from shower and bath Output: Two (2) valves for recycled water to the toilets and the washing machine Colour: Stone Front Plate: Stainless-steel front plate with white coloured logo and small status light
H300 Premium	Input: Greywater from shower and bath Output: Two (2) valves for recycled water to the toilets and the washing machine Choose from three colours: Dew, Chili and Stone Front Plate: Premium stainless-steel front plate with Hydraloop LED logo lights

Add-ons

Output Garden	One (1) extra valve for recycled water in the garden
Output Pool	One (1) extra valve for recycled water for the pool
Washing Machine Option	Option to recycle 50% of greywater from washing machine, including sanitary lift pump
Lift pumps *	DAB Novabox 30/300. This lift pump is submerged underneath the floor DAB Genix VT 030. This lift pump is on the floor

A lift pump is only necessary if the Hydraloop is positioned on the same floor or a storey higher as the shower/bathtub

Hydraloop H300 Specifications

Volume	300 liters / 80 gallons
Cleaning capacity	530 liters / 140 gallons per day
Dimensions	80 cm wide, 34 cm deep, 187 cm high 31,5" wide, 13,4" deep, 74" high
Voltage	100/240 Volt, 24 Volt internal
Usage	20 watts during treatment. Average power consumption: 200kWh/year
WIFI	The Hydraloop unit needs to be connected with an internal WIFI-network
Average recycled water quality	non-potable water CBOD5 (mg/L) < 10 TSS (mg/L) < 10 Turbidity (NTU) < 5 E. coli (MPN/100ml.) < 14 PH (SU) 6.0 – 9.0
Noise Level	± 44 dB.

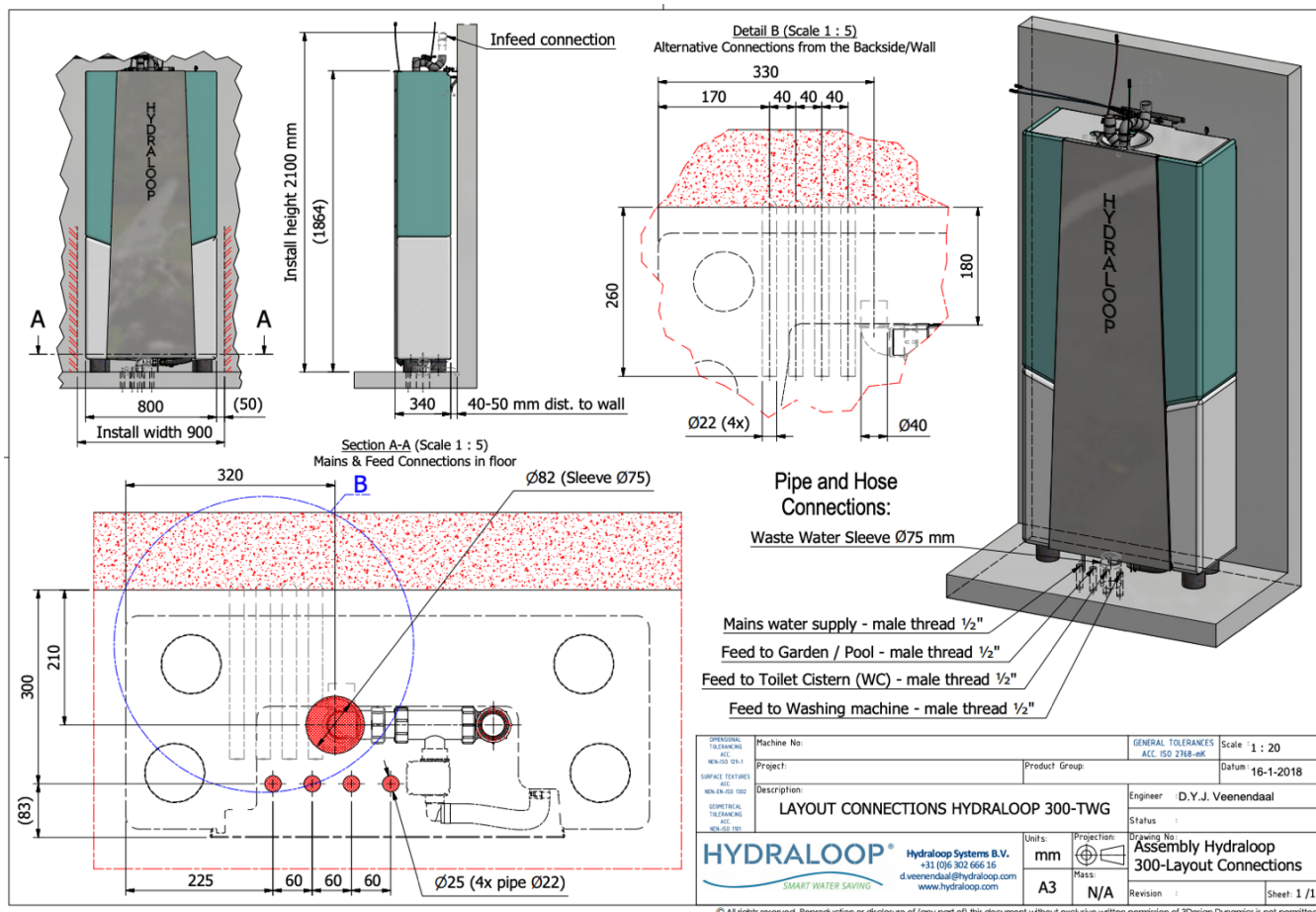
LED Light Indications

White	Hydraloop provides recycled water.
Blue	Hydraloop provides mains water (until recycled water becomes available).
Purple	The washing machine mode is active.
Green	In self-cleaning mode.
Orange + two (2) short sound signals per minute	The UV disinfection lamp is not functioning properly.
Red + three (3) short sound signals/minute	The water distribution pump has switched itself off. Which might happen when water is leaking somewhere in-house.

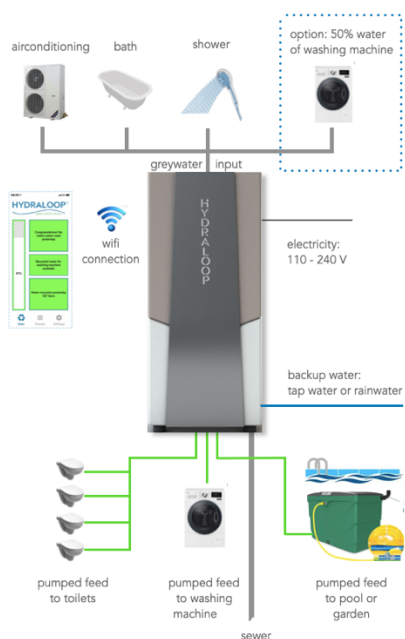


Certified to
NSF/ANSI
Standard 350

Sizes



Schematic overview



- Input from wastewater of bath & shower
- Output for toilet flushing, washing machine, garden irrigation and / or pool
- Wifi connected for Smartphone app, over the air updates and remote support
- 'Fit & Forget turnkey product
- No filters, membranes or chemicals
- Fully automatic, self-cleaning, low maintenance
- BREEAM and LEED certification points
- No compromise on hygiene and living comfort
- Contribute towards sustainable and offgrid living

For more information, please visit www.hydraloop.com

HYDRALOOP®
Smart Water Saving



The NSF-ANSI 350 standard verifies that all design and performance requirements of the standard have been met, and confirms through testing that efficient reuse water meets the stringent quality criteria. The NSF-ANSI 350 standard also sets water quality requirements for the reduction of chemical and microbiological contaminants for non-potable water use.

During the 24-week NSF-ANSI 350 testing period, the Hydraloop product was tested daily with a greywater flow rate equivalent to an average household. The product was tested for its ability to handle various types of wastewater, including but not limited to: greywater, blackwater, toilet water, and rainwater. The product was tested for its ability to handle various types of wastewater, including but not limited to: greywater, blackwater, toilet water, and rainwater. The product was tested for its ability to handle various types of wastewater, including but not limited to: greywater, blackwater, toilet water, and rainwater.

Parameter	Value
Flow rate (l/h)	100 l/h
Flow rate (l/min)	1.67 l/min
Flow rate (l/s)	0.28 l/s
Flow rate (l/h)	100 l/h
Flow rate (l/min)	1.67 l/min
Flow rate (l/s)	0.28 l/s
Flow rate (l/h)	100 l/h
Flow rate (l/min)	1.67 l/min
Flow rate (l/s)	0.28 l/s

Parameter	Value
Flow rate (l/h)	100 l/h
Flow rate (l/min)	1.67 l/min
Flow rate (l/s)	0.28 l/s
Flow rate (l/h)	100 l/h
Flow rate (l/min)	1.67 l/min
Flow rate (l/s)	0.28 l/s



kiwa

CERTIFICATE

Water recycling system

Hydraloop International B.V.

Hydraloop International B.V. is a company with the following information on the water recycling system and its components. The company is responsible for the design, installation, and maintenance of the system. The company is also responsible for the training of the staff and the provision of technical support. The company is also responsible for the provision of spare parts and the replacement of the system components. The company is also responsible for the provision of the necessary documentation and the provision of the necessary training and support. The company is also responsible for the provision of the necessary documentation and the provision of the necessary training and support.